

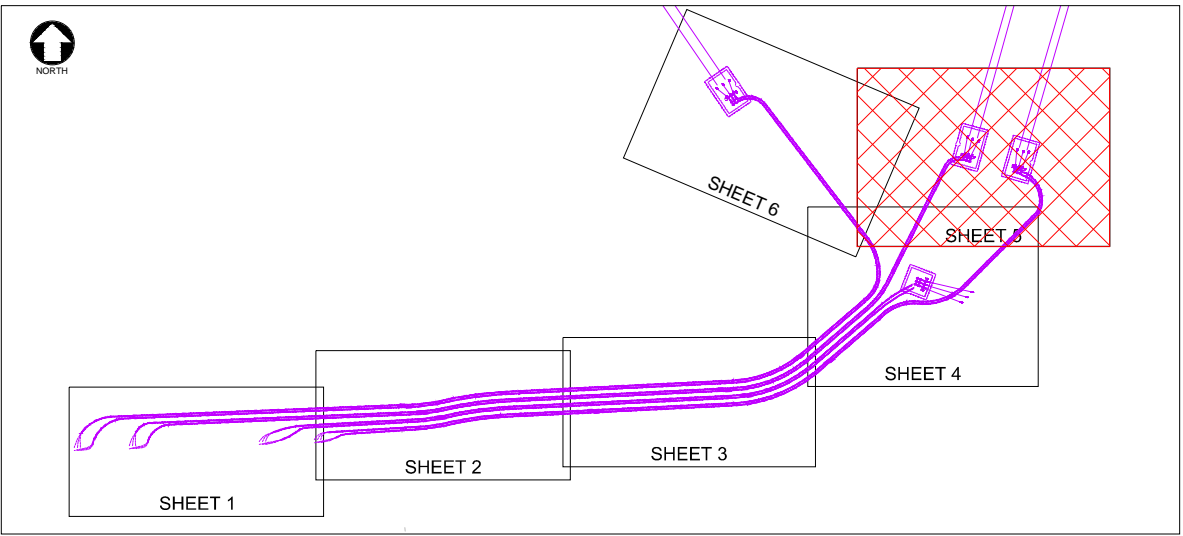
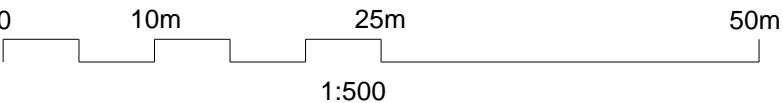


Cashla 1

Cashla 1 Cable Sealing
End Compound

Tynagh Cable Sealing
End Compound

Tynagh



KEYPLAN
N.T.S.

Notes

- ©Ordnance Survey Ireland/Government of Ireland. Ordnance Survey Ireland Licence No. EN0034515.
- Design for Planning Purposes, not for Construction.

Key to symbols

- New Equipment
- Existing Equipment
- Equipment to be Removed
- New Cable Route
- Access Track

Reference drawings

02A	29/01/2016	CT	Issued for Planning	TK	TK
01A	18/12/2015	CT	Issued for Planning	TK	TK
Rev	Date	Drawn	Description	Ch'k'd	App'd



South Block
Rockfield, Dundrum
Dublin, 16
Ireland
T: +353 01-2916700
F: +353 01-2916747
W: www.mottmac.com

Client
Apple Distribution International

Title
Caraunduff 220kV Substation
220kV Cable Route Layout
Sheet 5 of 6

Designed	D.McCormack	Eng check	T.Keane
Drawn	C.Thian	Coordination	D.McCormack
Dwg check	M. McCarthy	Approved	T.Keane
Scale at A1	Status	Rev	Security
1:500	APR	02A	STD

Drawing Number
MMD-360988-E-DR-03-XX-9305